



# Abergavenny Hub

## Furniture Proposals

Prepared By:  
GWP Architecture  
15th Floor  
Brunel House  
2 Fitzalan Road  
Cardiff, CF24 0EB

02921 303 322 (t)

[www.gwp-arch.com](http://www.gwp-arch.com)  
[architecture@gwp-arch.com](mailto:architecture@gwp-arch.com)

Document QA:  
Ref: (391)-1809-GWP-A-2A-  
Furniture Proposals-01  
Purpose: Comment  
Revision: 04  
First Issue Date: 30.10.19

Prepared for:  
Monmouthshire County Council  
PO Box 106  
Coldicot  
NP26 9AN





## CONTENTS

### EXECUTIVE SUMMARY

#### SECTION 1.0

##### SITE LOCATION

1.1 SITE LOCATION PLAN

#### SECTION 2.0

##### PROPOSALS

2.1 CONCEPT GROUND FLOOR PLAN

2.2 PROPOSED GROUND FLOOR PLAN

2.3 CONCEPT FIRST FLOOR PLAN

2.4 PROPOSED FIRST FLOOR PLAN

2.5 FURNITURE IMAGES - GROUND FLOOR THEATRE AREA

2.6 FURNITURE IMAGES - FIRST FLOOR HUB 2 MULTI-USE ROOM

2.7 FURNITURE IMAGES - FIRST FLOOR HUB 1 INFORMATION CENTRE

2.8 FURNITURE IMAGES - FIRST FLOOR COMMUNITY ROOM

2.9 FURNITURE IMAGES - FIRST FLOOR MAYOUR'S PARLOUR, BOOK SHELVING AREA & ACOUSTIC BOOTH

#### SECTION 3.0

##### BESPOKE FURNITURE

3.1 INFORMATION POINT - PLAN

3.2 INFORMATION POINT - SECTION

3.3 GROUND FLOOR WAITING AREA SEAT

#### SECTION 4.0

##### FURNITURE SCHEDULES

4.1-4.3 FURNITURE SCHEDULES



## EXECUTIVE SUMMARY

This document provides new Furniture Proposals for the Ground and First floor plans at the Abergavenny Town Hall, forming the Abergavenny Hub Interiors Project for Monmouthshire County Council.

The proposals within this document are based on a series of consultation meetings and direction from key stakeholders at Monmouthshire County Council and are based on information previously agreed in principle. In accordance with previous clarification agreed with Monmouthshire County Council the Furniture proposals shown in this document do not form part of the Abergavenny Hub Project tender. This was agreed so that more time can be allowed for further consultation with stakeholders, in order to determine specific requirements.

Detailed information of the agreed requirements will be issued to contractors during a separate Furniture tender period and will form the basis of the Furniture Tender. A separate budget has been provided for the proposed furniture following agreement of final requirements and obtaining quotations from several furniture specialists.

The furniture shown in this report is subject to the input from furniture specialists and confirmation of their own products, together with a priced breakdown of all elements on a similar basis to the information to be issued to furniture specialists. This process will enable further development of the brief.

New furniture is to be provided in the following rooms on the ground and first floor:

a. The Proposed Ground Floor Layout provides furniture proposals for the following rooms:

- Town Clerk's Office
- Staff Room/Kitchen
- Theatre Office
- Theatre Foyer/Function Space
- One-Stop Shop
- Interview/Meeting Rooms 01 & 02

b. The Proposed First Floor Layout provides furniture proposals for the following rooms:

- Theatre Office
- Mayor's Parlour
- Hub 1 Library Area, including; Information Centre, Early learning/Junior Section
- Multi-use Tea Room
- Community Room
- Hub 2 Library Area

Proposed furniture items:

a. Ground Floor furniture

- Waiting area seating unit (custom made)
- Office desks & chairs
- Interview room tables & chairs
- Accessible desk/table
- Underdesk filing cabinets
- Tall storage cabinets
- Leaflet cabinets & cradenzas
- Booth screens

b. First Floor furniture

- Reception counter on castors (custom made)
- Book shelving on castors (relocatable)
- Book shelving against walls (static)
- Reading/study booths
- Office desks & chairs
- Meeting room tables & chairs
- General seating
- Comfy seating



## EXECUTIVE SUMMARY

### CLARIFICATIONS

#### a. Book shelving capacity

The total estimated book capacity stated in the original Interior design report was 15,072, which comfortably exceeded the stated minimum book capacity of 14,700 mentioned in the original brief by 372 books. However, following a recent strategic review of the Hub library provision it has been determined that a more flexible and open plan space should be provided in the Hub 2 extension area in order to accommodate other building users on the first floor. This has resulted in the book shelving provision in the Hub 2 extension area being reduced following the instruction to omit the centrally located mobile book shelving units and the introduction of new tables and chairs to provide an informal study area and some additional relaxing chairs. New rotating media tower units have been added in order to offer increased flexibility to this area. The wall mounted book shelving units have been retained.

The calculation used to estimate book capacity is based on 12 books per foot (305mm). This is a general rule of thumb that assumes each book has an average width of 1 inch (25mm). It should be noted that the estimated book capacity stated for the book shelving units can fluctuate depending on actual book sizes (hardbacks, paperbacks etc).

Book shelving to the main library area in Hub 1 comprises a number of double sided mobile book shelving units that are mounted on casters to enable flexibility. In addition to this there are a number of fixed wall mounted book shelving units and some curved units in the early years area. Comfy seating and coffee tables are also provided around the library area and there are two feature acoustic reading/study booths.

The following items of furniture will be custom made and based on imagery and drawings provided in this document, and subject to contractor input for development into final proposals:

Ground Floor – waiting area curvy seating unit.

First Floor – circular reception area.

The waiting area curvy seating unit is to have a wipeable, durable light green finish which is inspired by the patinated copper roof of the town hall tower. The curvy shape of the seating is intended to be a feature that adds interest to the floor space. A curved partition wall will be constructed to the rear of the seating (by others-TBC) to provide privacy to the interview booths. A mural of the mountain scape surrounding Abergavenny is intended to be applied to the privacy screen. The seating will have arm rests as shown to provide ambulant accessibility. This seating unit will be constructed in sections/segments in order to enable possible relocation, or replacement of sections.

The first floor reception counter is a flexible feature in the centre of the main library area. It will have wheelchair accessible leg room to the counter and be fully demountable so that it can be relocated elsewhere in the hub area. In order to accommodate this the reception unit will have sections that are mounted on casters to enable ease of movement by staff.

For the purpose of enabling contractors to provide accurate tenders on a similar basis, the book shelving and furniture in this document has been selected to consider function, quality, size and appearance and is intended to give as accurate an impression of client requirements as possible. The furniture and book shelving products specified in this document have facilitated accurate setting out and confirmation of approximate total book capacity. The proposed library layout confirms that accessible space is achievable for wheelchair users around all units to comply with the Building Regulation requirements of Part M2. Following review of shelving product dimensions it has been possible to provide an additional wall mounted book shelving unit in the space adjacent to the Community Room. This additional book shelving unit offers some compensation for the reduced book capacity in the Hub 2 extension area.

The estimated total book capacity is now 14,570, which is only 130 books less than stated in the original brief. Bearing in mind the tolerances for estimating book capacity and the omitted book shelving units this reduction is considered to be negligible and the requirements of the brief met.

#### b. The following items do not form part of the furniture tender:

- Bins/recycling recepticals
- Bibiotecha Quick drop units
- Photocopiers
- IT/PC's and reprographic items
- Microfiche system
- Undercounter fridges
- Microwave ovens
- Hydro hot water boilers
- Dishwashers
- Fixed IT desk tops in Hub 2 extension (Hub contract item)
- Tea Room kitchen base & wall units (Hub contract item)



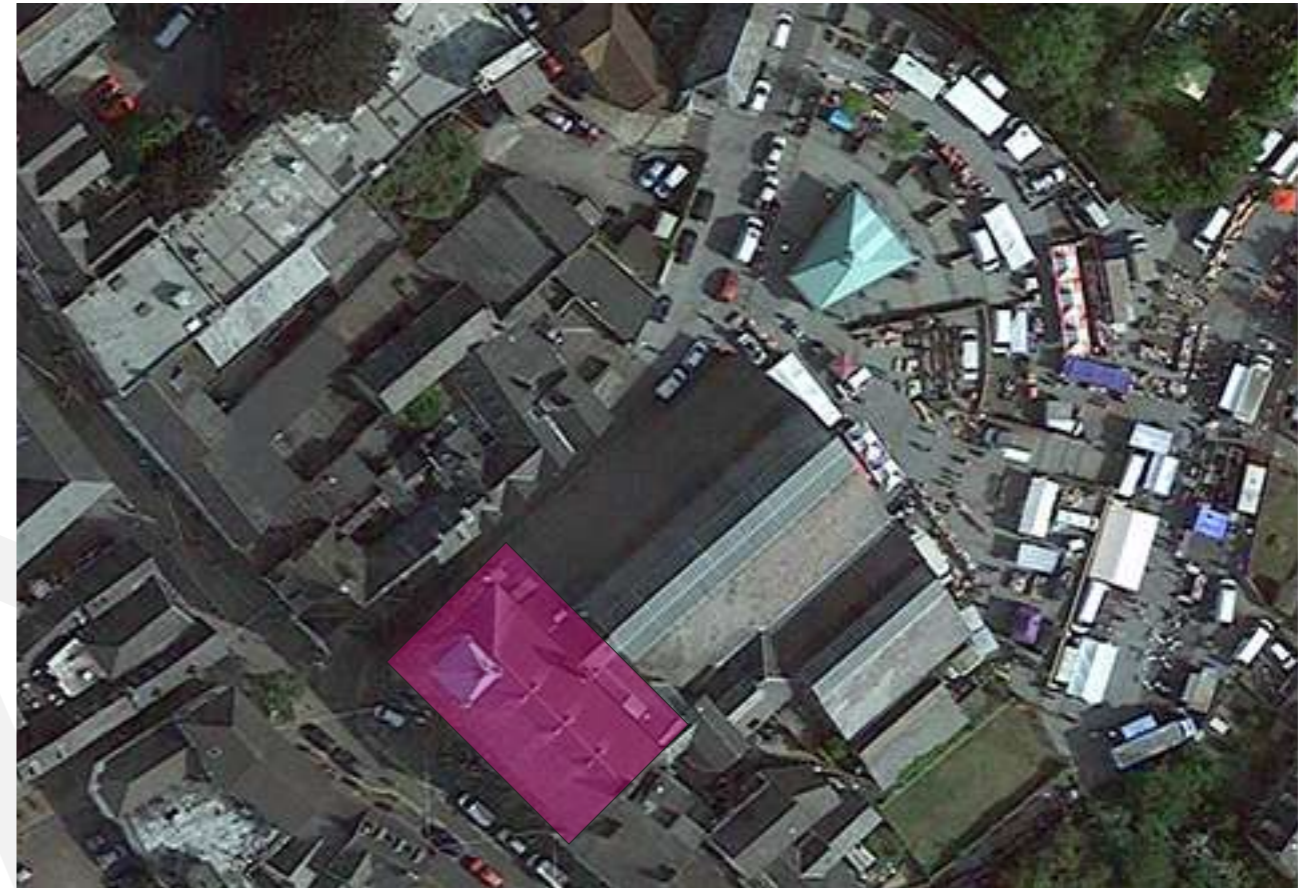
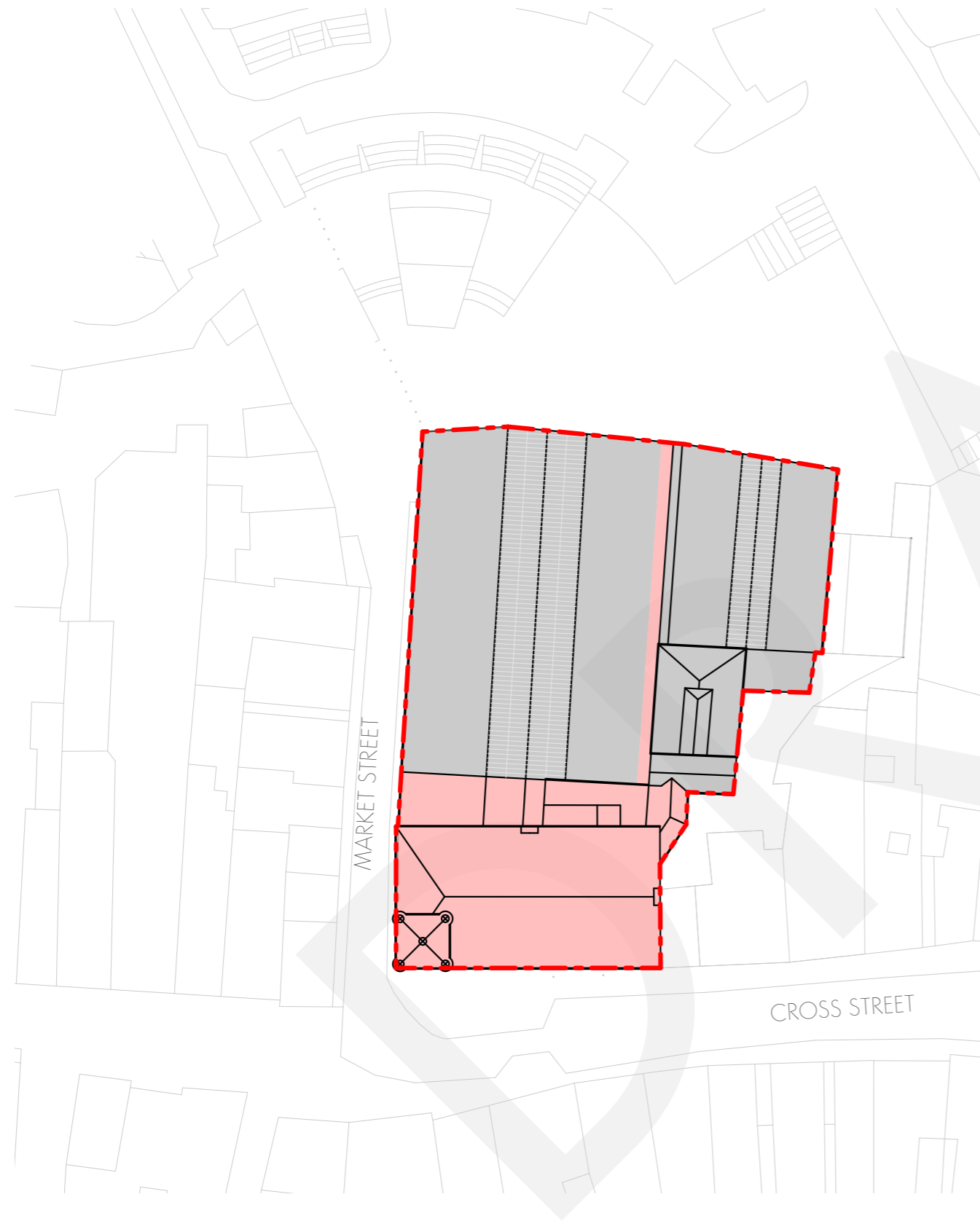
# Section 1.0

## Site Location



# 1.0 SITE LOCATION

## 1.1 SITE LOCATION PLAN



AERIAL VIEW OF SITE

LOCATION PLAN



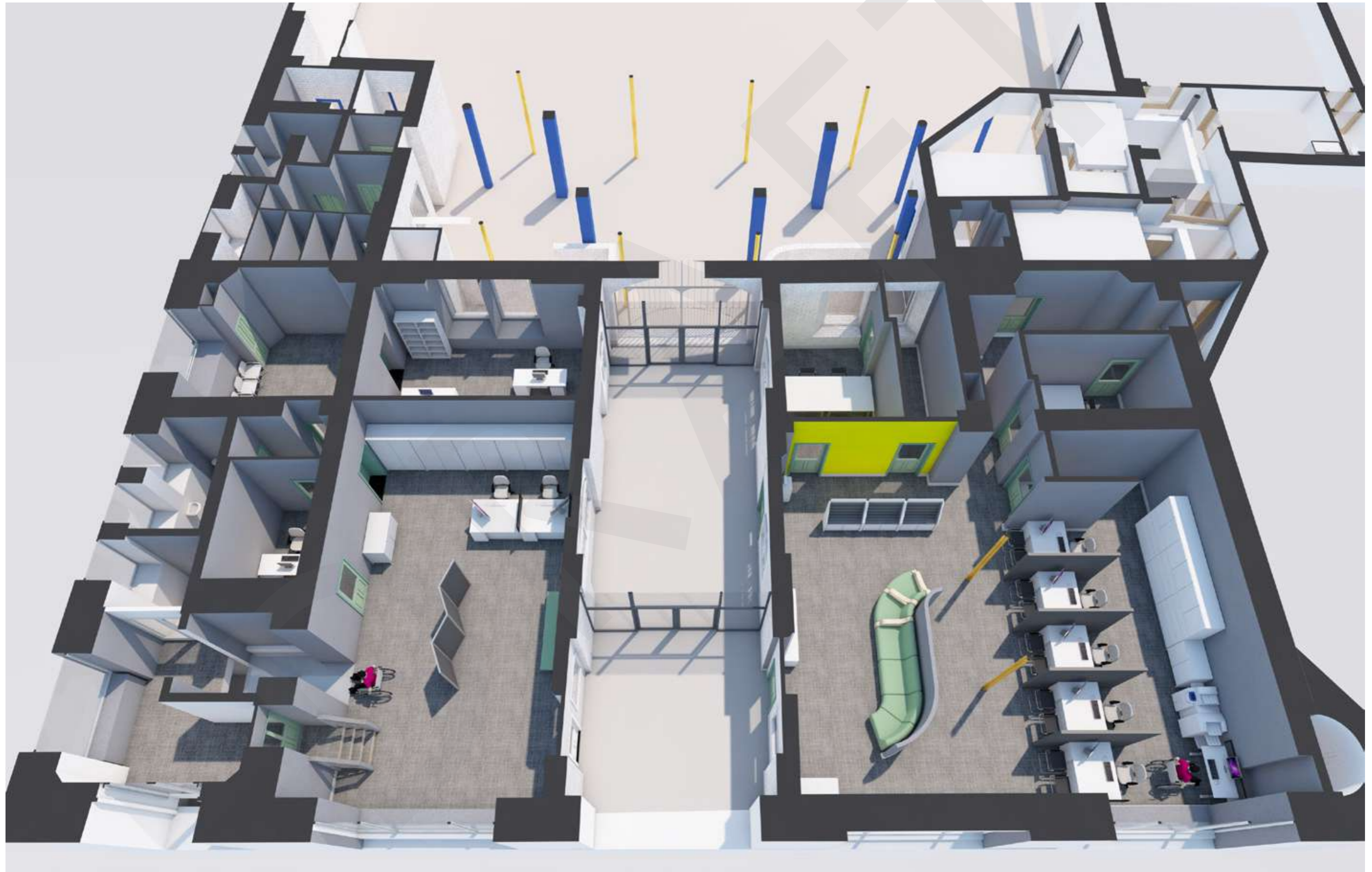
# Section 2.0

## Proposals



## 2.0 PROPOSALS

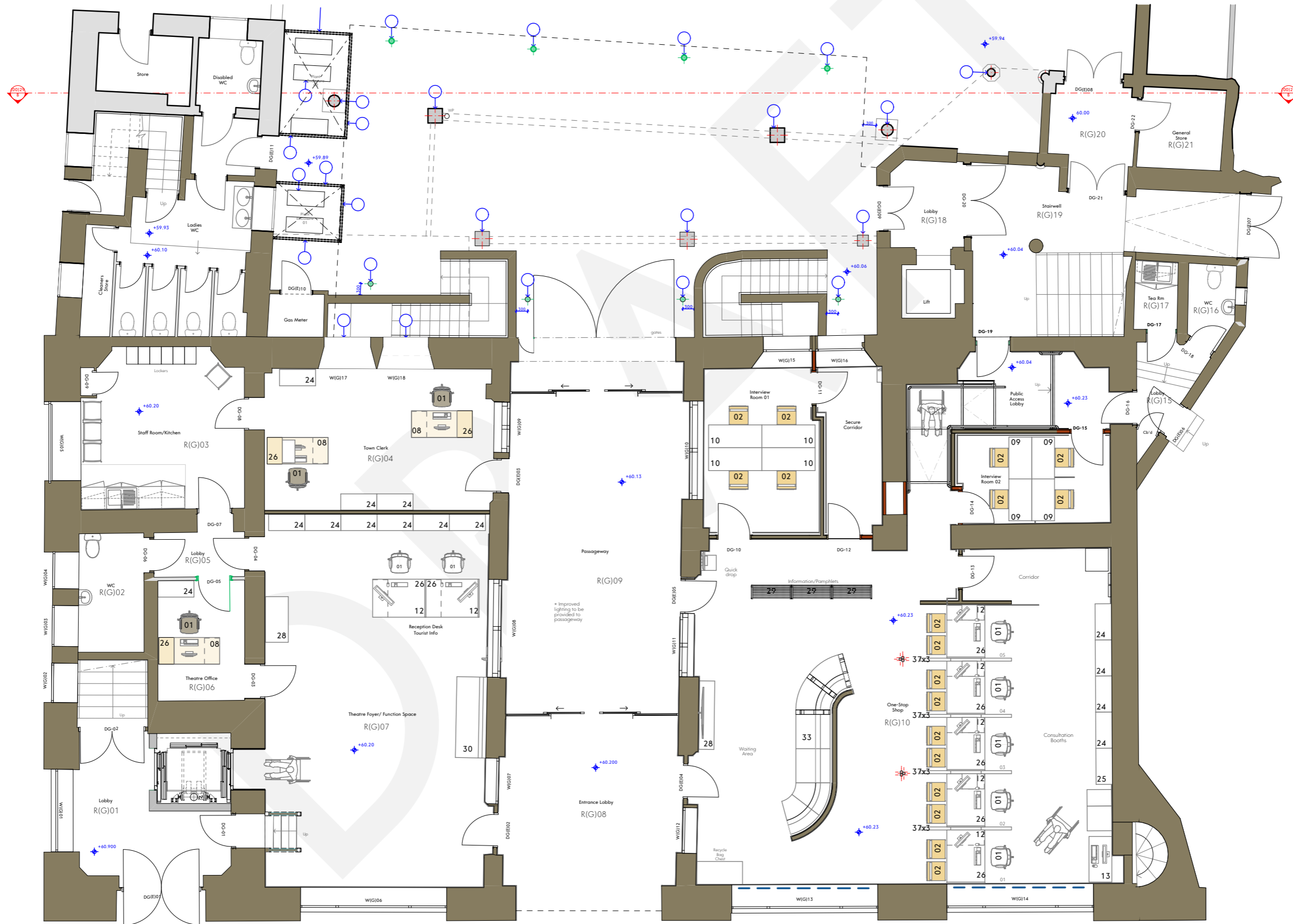
### 2.1 CONCEPT GROUND FLOOR PLAN





## 2.0 PROPOSALS

### 2.2 PROPOSED GROUND FLOOR PLAN





## 2.0 PROPOSALS

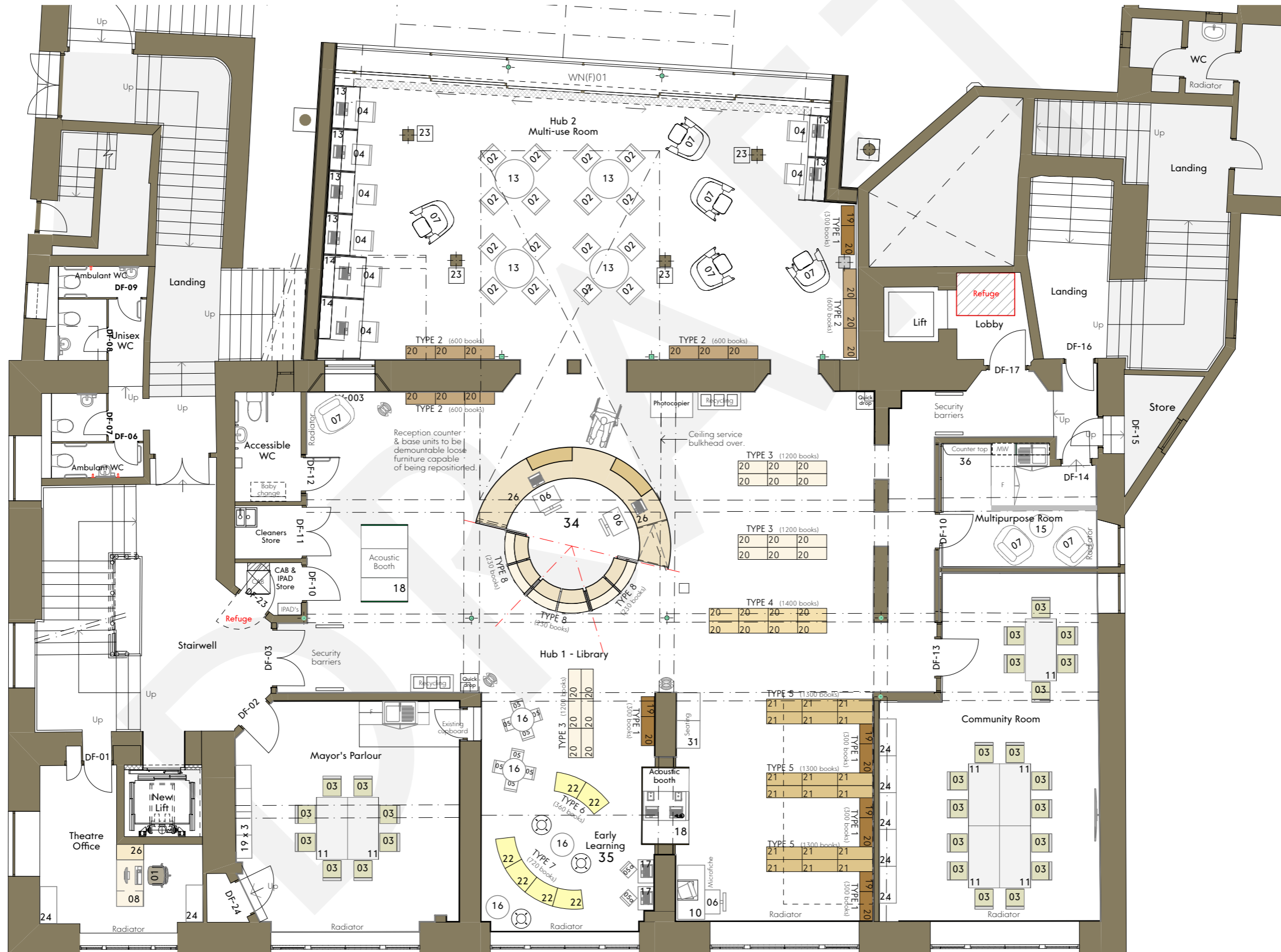
### 2.3 CONCEPT FIRST FLOOR PLAN





## 2.0 PROPOSALS

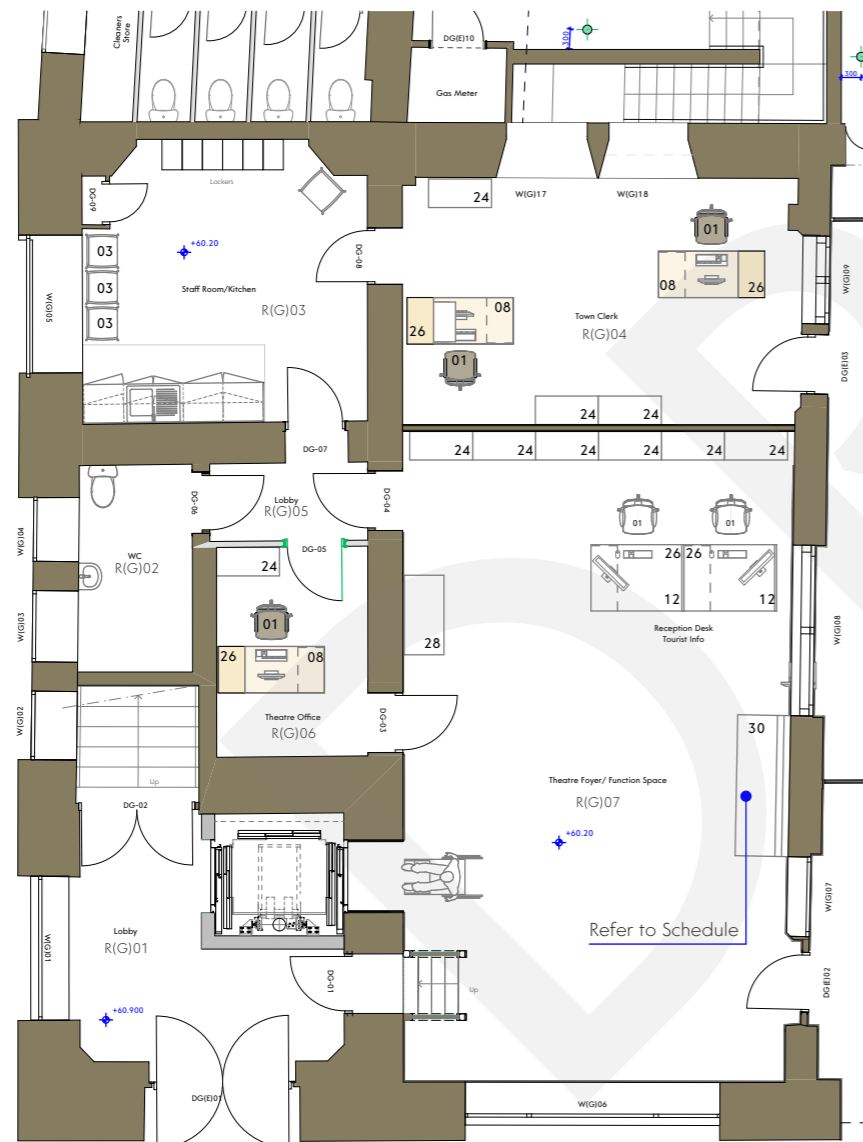
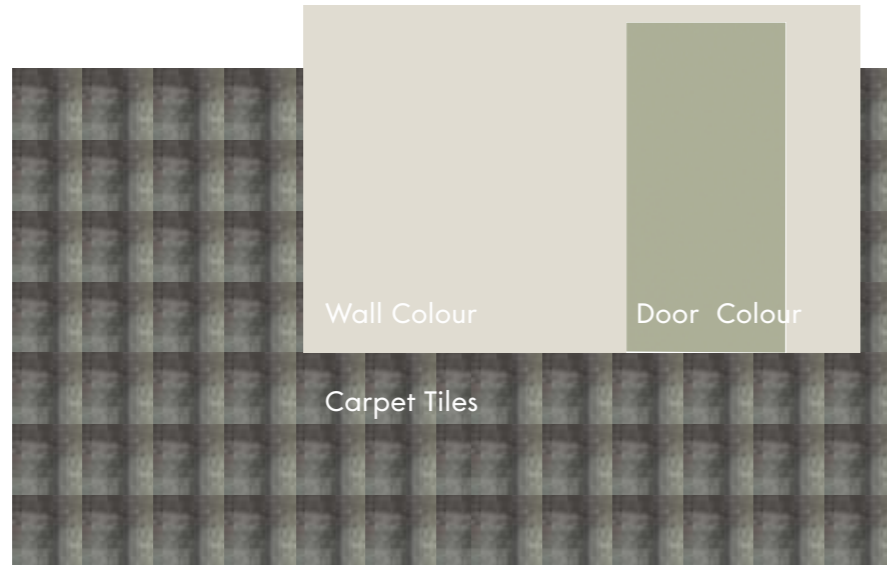
### 2.4 PROPOSED FIRST FLOOR PLAN





## 2.0 PROPOSALS

### 2.5 FURNITURE IMAGES - GROUND FLOOR THEATRE AREA



12 (Office desk 700mm x 1600mm x 750mm)  
08 (Office desk 700mm x 1600mm x 750mm)



03 (Office Chair)      01 (Office Chair)



26 (3 Drawer pedestal)



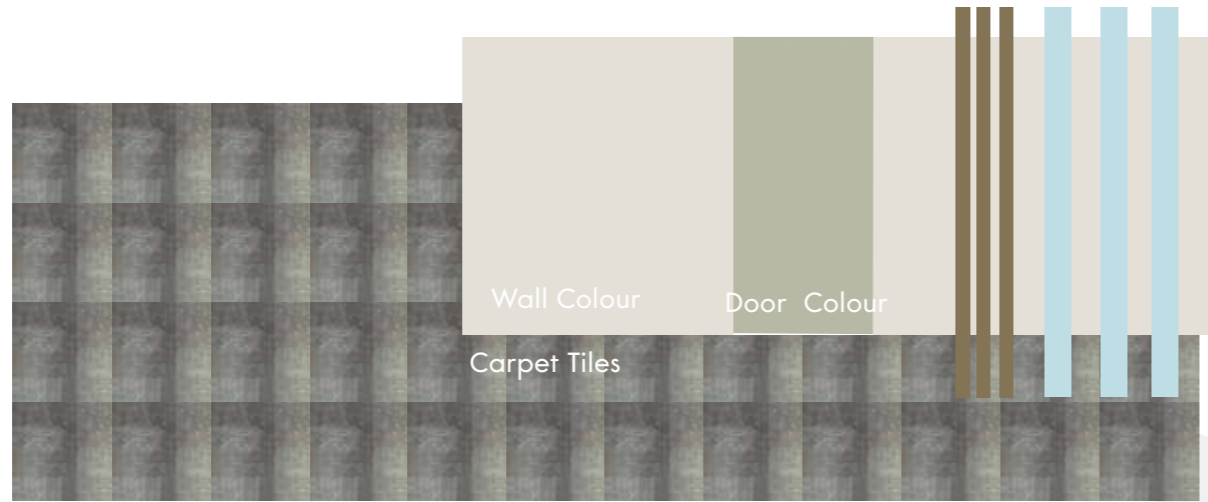
28 (Office Cupboard)

24 (Office Cupboard)



## 2.0 PROPOSALS

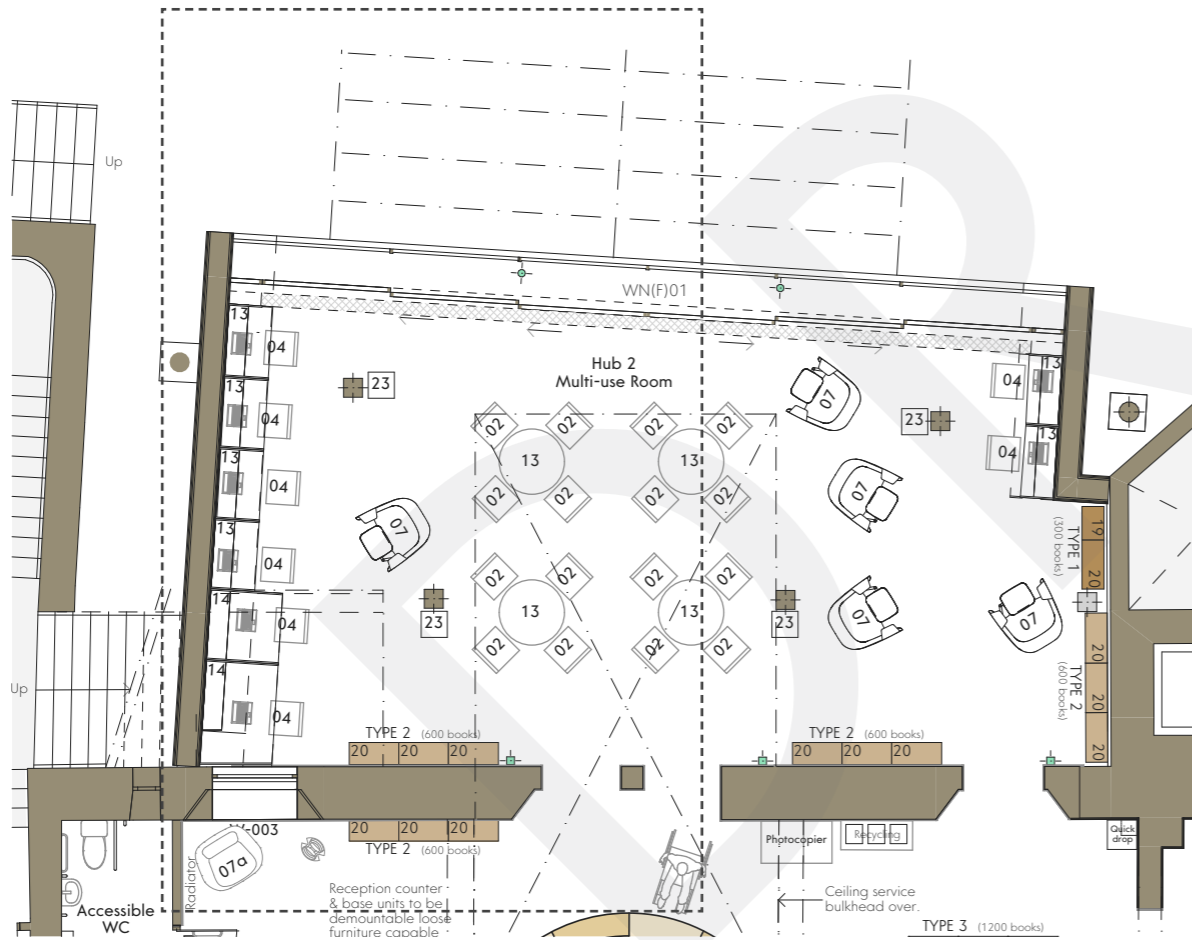
### 2.6 FURNITURE IMAGES - FIRST FLOOR HUB 2 MULTI-USE ROOM



23 (Spinner Single with Magazine Tower)



04 (CARA chair- no arms)



07a - Tube Armchair



07 Tube Armchair



02 (OMNY 2 Chair Comac mint colour tbc.)

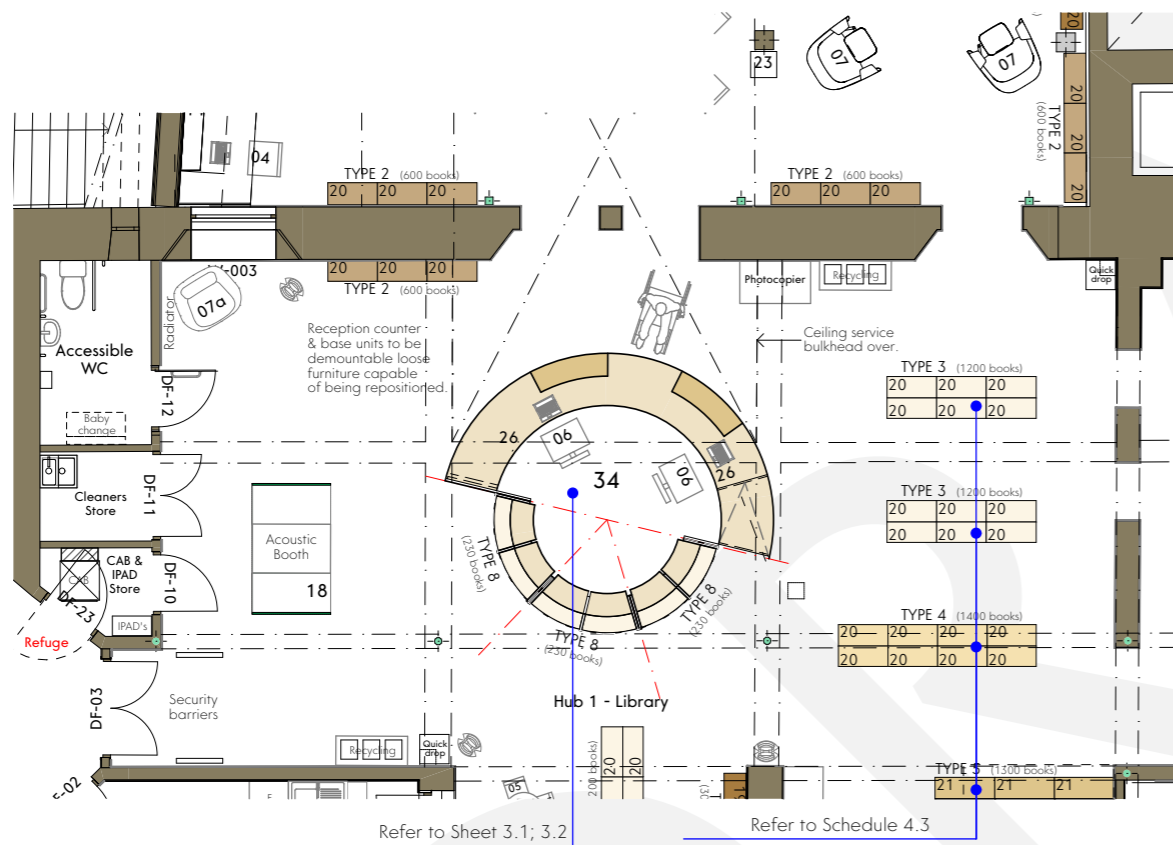


13 (Round Office table Diameter- 1000mm)



## 2.0 PROPOSALS

### 2.7 FURNITURE IMAGES - FIRST FLOOR HUB 1 INFORMATION CENTRE



07 Tube Armchair



07a - Tube Armchair



06 (Cara Vista Chair)



18 (Railway Carriage Pod Upholstered)



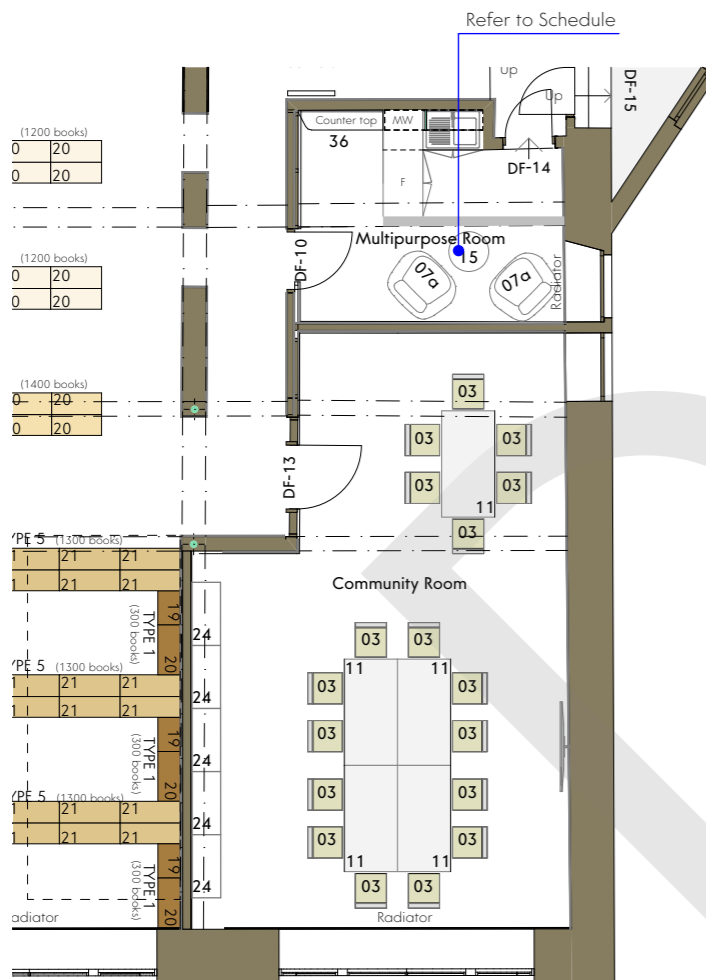


## 2.0 PROPOSALS

### 2.8 FURNITURE IMAGES - FIRST FLOOR COMMUNITY ROOM



03 (OMNY 4 chair )



07a - Tube Armchair

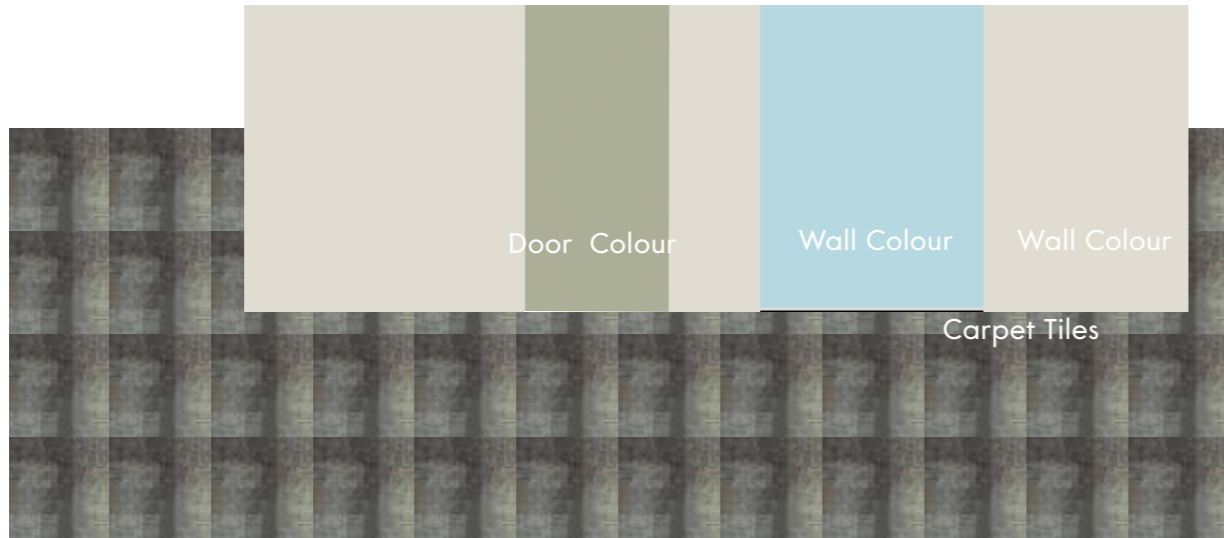


11 (Conference table)



## 2.0 PROPOSALS

### 2.9 FURNITURE IMAGES - FIRST FLOOR MAYOUR'S PARLOUR, BOOK SHELVING AREA & ACOUSTIC BOOTH



22 (Early years curved book shelving)



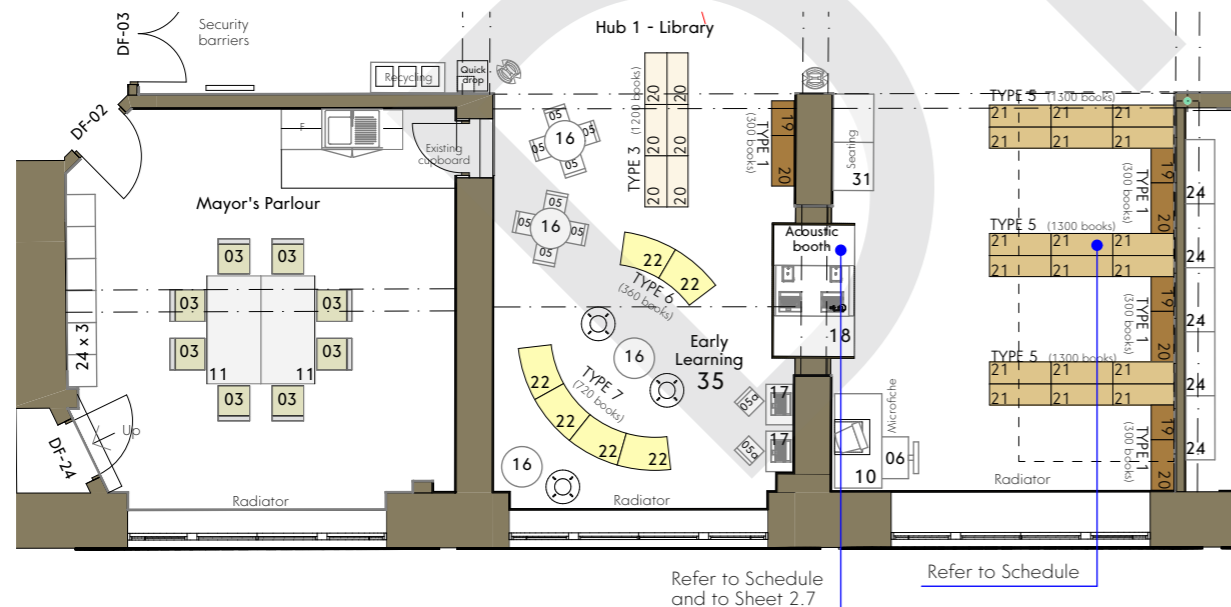
Bookshelves on Casters- (RATIO-S BCI system) ILLUSTRATIVE VIEW



03 (OMNY 4 chair)



11 (Conference table)



Bookshelves on Casters- (INFORM CURVED SHELVING BCI system) ILLUSTRATIVE VIEW



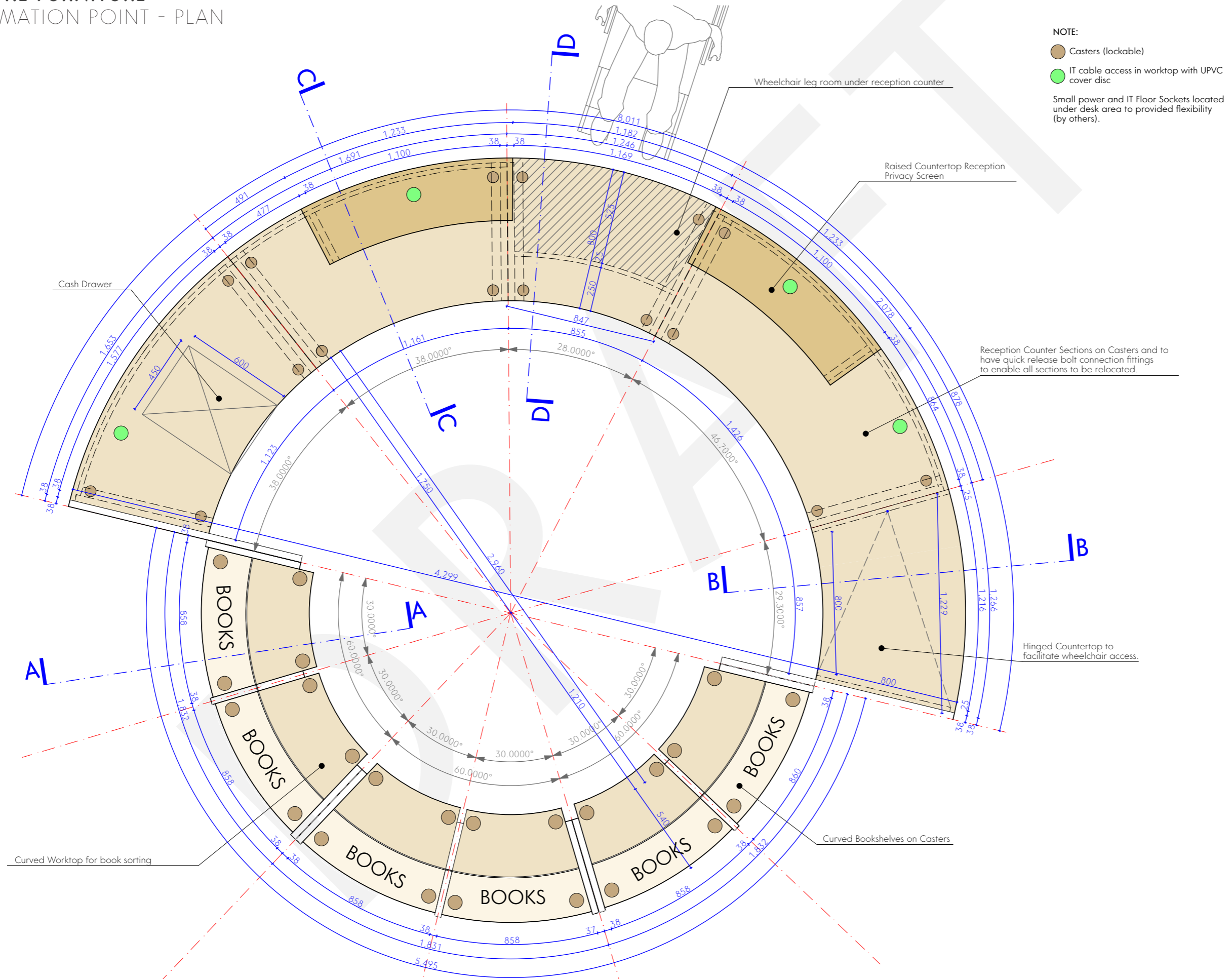
## Section 3.0

### Bespoke Furniture



### 3.0 BESPOKE FURNITURE

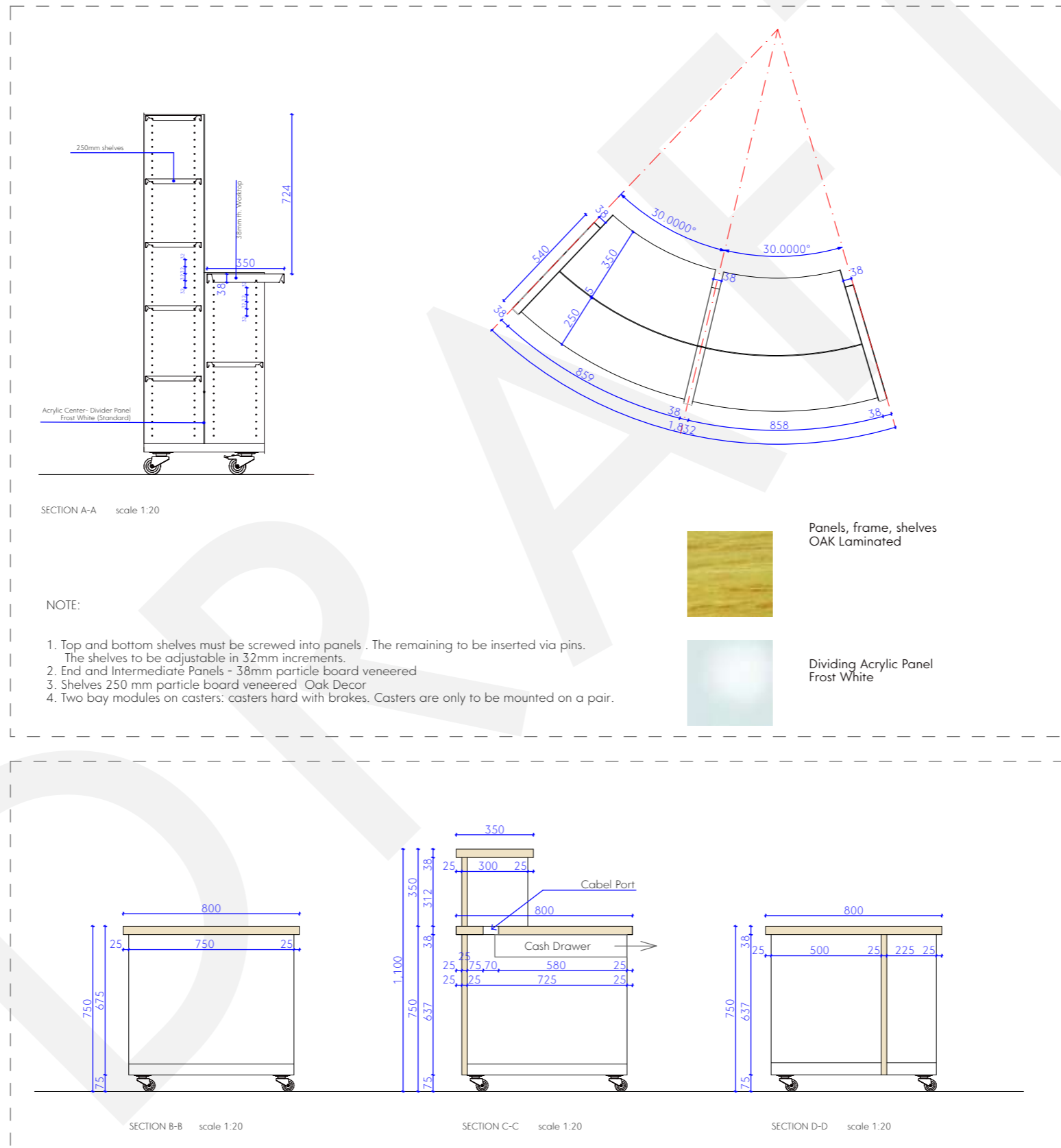
#### 3.1 INFORMATION POINT - PLAN





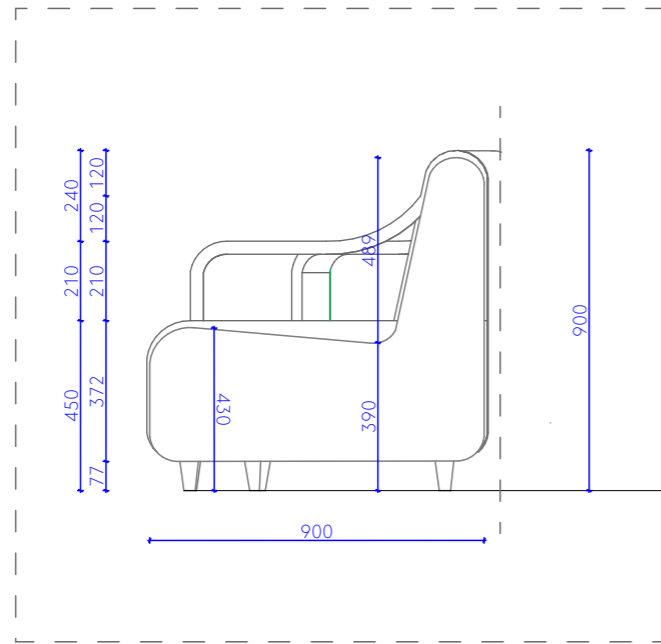
### 3.0 BESPOKE FURNITURE

#### 3.2 INFORMATION POINT - SECTION

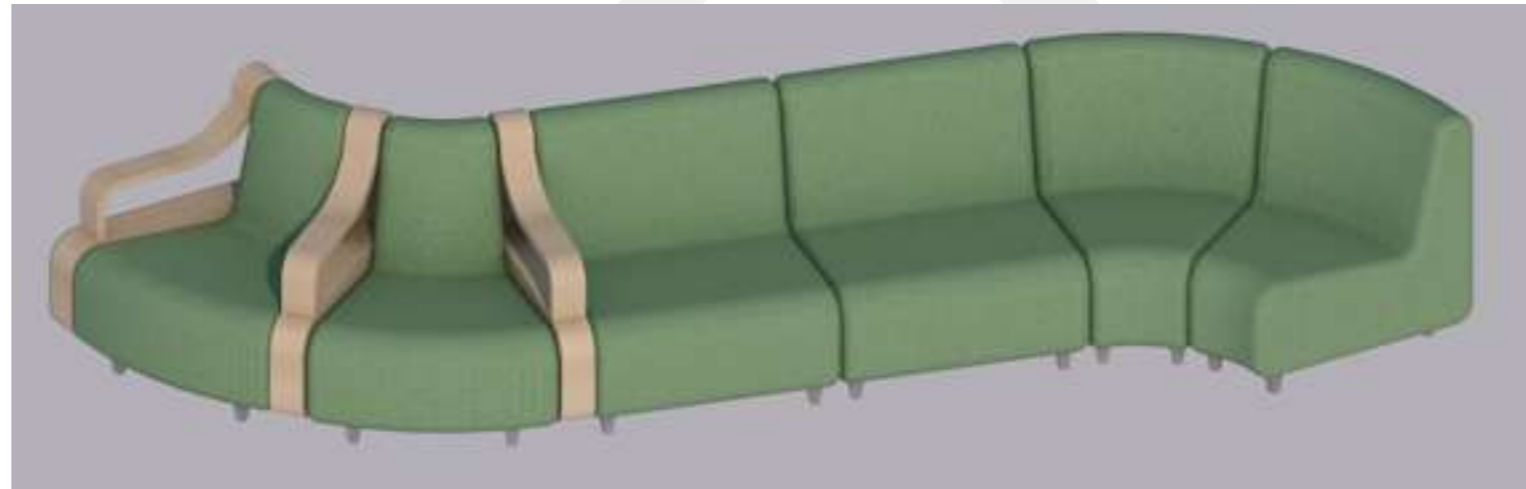


### 3.0 BESPOKE FURNITURE

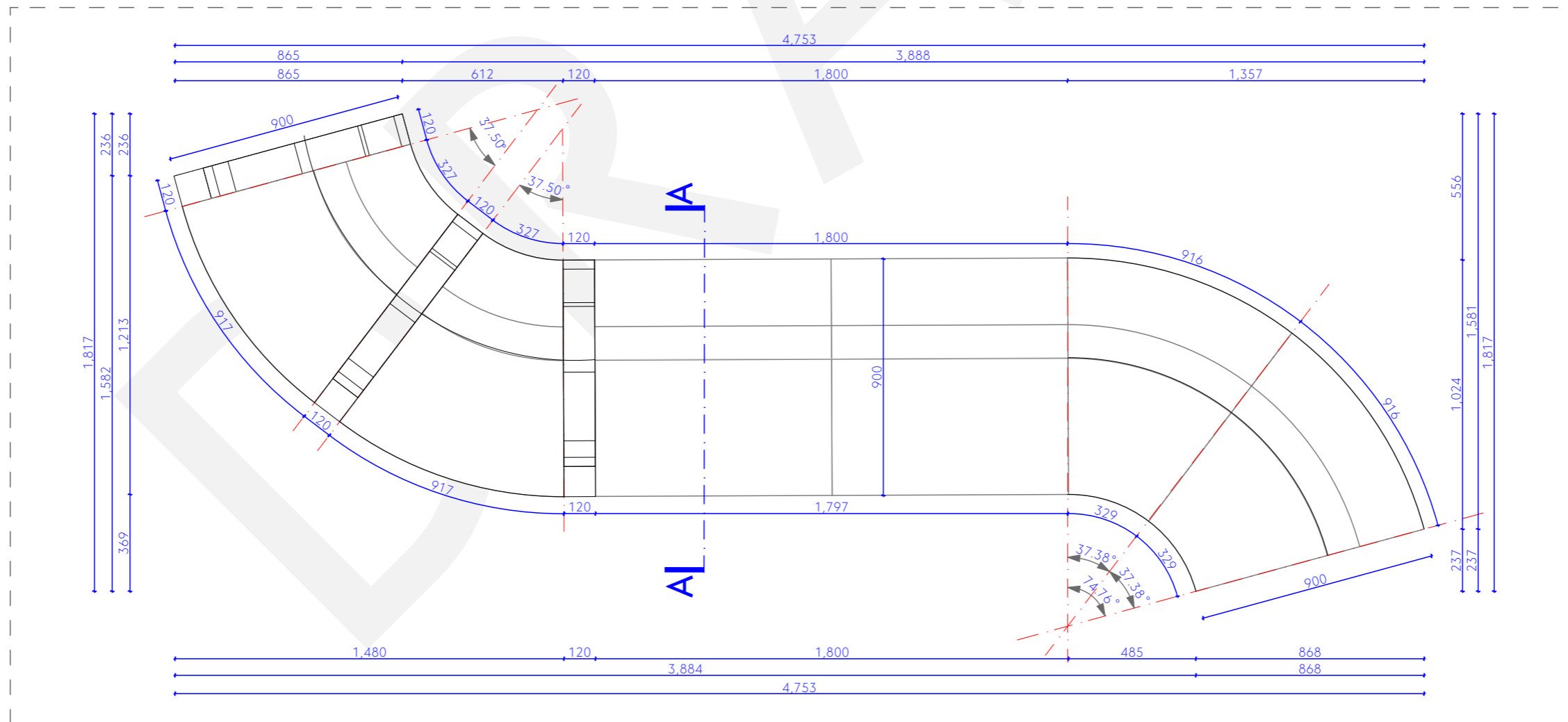
#### 3.3 GROUND FLOOR WAITING AREA SEAT



SECTION A-A scale 1:20



VIEW



PLAN scale 1:20



# Section 4.0

## Furniture Schedules



## 4.0 FURNITURE SCHEDULES

### 4.1 FURNITURE SCHEDULES

#### FURNITURE SCHEDULE 1 OF 2

DESCRIPTION					
Ref.	Room	Furniture Description/ Dim ( D x W x H)	Finishing/Colour/Details	Name/System Equal Approved Manufacturer	No.
<b>Chairs</b>					
01	R(G) 04	Office chair	Grey/white mesh back. Grey seat. Chalk frame, polished aluminium base. Integral height adjustable lumbar support, weight balance with tension adjustment. 60-65mm seat side. Finally colours tbc.	TAURO chair /Manufacturer- Comac	2
01	R(G) 06	Office chair		1	
01	R(G) 07	Office chair		2	
01	R(G) 10	Office chair		5	
01	Theatre Office	Office chair		1	
<b>Total</b>					<b>11</b>
02	R(G)10 Interview rooms	Office chair	Chair - 4 legs. Anthracite colour. Light grey/olive upholstered seat. Metal parts- chrome. Finally colours tbc.	OMNY 2 chair /Manufacturer- Comac	8
02	R(G)10 Interview rooms	Office chair		OMNY 2 chair /Manufacturer- Comac	10
02	Hub 2 Multi-use Room	Office chair		OMNY 2 chair /Manufacturer- Comac	16
<b>Total</b>					<b>34</b>
03	R(G)03	Office (conference)chair	Chair with arms, 4 legs. Anthracite colour. Light grey/olive upholstered seat. Metal parts- chrome. Finally colours tbc.		3
03	Mayor's Parlour	Office (conference)chair		OMNY 4 chair /Manufacturer- Comac	8
03	Community Room	Office (conference)chair			18
<b>Total</b>					<b>29</b>
04	Hub 2 Multi-use Room	Office chair	Black nylon base, Black plastic frame. Non-arm. One piece mesh construction.	Kara chair /Manufacturer- Comac	8
05,05a	Hub 1 Early Learning	Children chair 8-05, 2-05a			10
06	Hub 1 Information Point	Office chair	Polished aluminium base, Chalk plastic frame. Fixed arms. One piece mesh construction.	Kara chair /Manufacturer- Comac	2
06	Hub 1 Microfiche Desk	Office chair		Kara chair /Manufacturer- Comac	1
<b>Total</b>					<b>3</b>
<b>Armchairs</b>					
07a	Hub1 Reception;tea room	Armchair	Lounge ,comfortable Chair, (e.g.. tue chair)	LOVEDUP/Deadgood,DNA tue chair	3
07	Hub 2 Multi-use Room	Armchair	Lounge ,comfortable Chair, (e.g.. tue chair)	LOVEDUP/Deadgood,DNA tue chair	5
<b>Total</b>					<b>6</b>
<b>Desk/Table</b>					
08	R(G) 04	Office desk 700mm x 1600mm	Classic design desk. Cantilever frame and legs in Silver Finish. Two cable ports. Coordinating shallow rear modest panel. 25mm melamine desktop and panel. Colour tbc.	Brunner Torino Contract Table /Wellworking or Atom Table/Corporate Workspace Limited	2
08	R(G) 06	Office desk 700mm x 1600mm			1
08	Theatre Office	Office desk 700mm x 1600mm			1
<b>Total</b>					<b>4</b>
09	R(G)10 Interview room 2	Office desk 600mm x 1100mm	Minimalist design, column or square steel tubing legs.Legs chromed. Top laminated .Colour tbc.	Karbon/ Officefurniture	4
10	R(G)10 Interview room 1	Office desk 600mm x 1400mm			4
10	Hub 1 Microfiche Desk	Office desk 600mm x 1400mm			1
<b>Total</b>					<b>5</b>
11	Mayor's Parlour	Conference Table 800mm x 1600mm	Minimalist design, column or square steel tubing legs.Legs chromed. Top laminated .Colour tbc.	Brunner Torino Contract Table /Wellworking or Atom Table/Corporate Workspace Limited	2
11	Community Room	Conference Table 800mm x 1600mm			5
<b>Total</b>					<b>7</b>
12	R(G) 10	Office desk 1000mm x 1400mm x 750mm	Classic design desk. Cantilever frame and legs in Silver Finish. Two cable ports. Coordinating shallow rear modest panel. 25mm melamine desktop and panel. Colour tbc.	Karbon/ Officefurniture	5
12	R(G) 07	Office desk 1000mm x 1400mm x 750mm			2
<b>Total</b>					<b>7</b>
13	Hub 2 Multi-use Room	Round Office table Radius- 500mm	Minimalist design, column or square steel tubing legs.Legs chromed. Top laminated .Colour tbc.		4
14	NOT USED				
15	Hub1 Reception;tea room	Coffee Table R= 300mm			1
16	Hub 1 Early Learning	Round Children Table R= 300mm			5
17	Hub 1 Early Learning	Children Table 400mm x 650mm			2
<b>Total</b>					<b>2</b>
<b>Acoustic booth</b>					
18	Hub 1 Library	Acoustic booth 1200mm x 2108mm x 2100mm	Railway Carriage Pod Upholstered	Furniture Pods	2



## 4.0 FURNITURE SCHEDULES

### 4.2 FURNITURE SCHEDULES

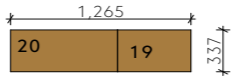
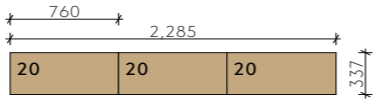
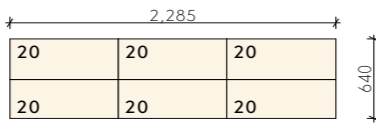
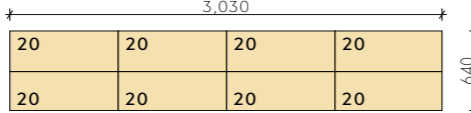
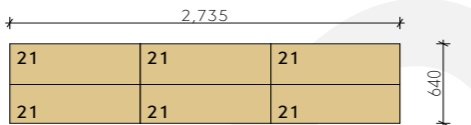
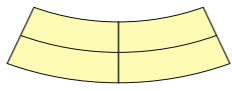
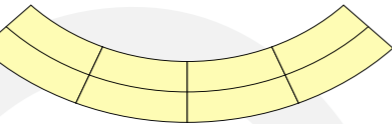
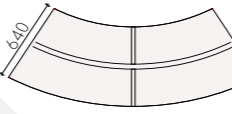
#### FURNITURE SCHEDULE 2 OF 2

DESCRIPTION					
Ref.	Room	Furniture Description/ Dim ( D x W x H)	Finishing/Colour/Details	Name/System Equal Approved Manufacturer	No.
<b>Bookshelves</b>					
19		Bookshelves refer to Sheet 4.3			
20		Bookshelves refer to Sheet 4.3			
21		Bookshelves refer to Sheet 4.3			
22		Bookshelves refer to Sheet 4.3			
<b>Office Storage/Cupboard</b>					
23	Hub 2 Multi-use Room	Spinner Single with Magazine Tower	400mm x 400mm x 1660mm	DEMCO Spinners	<b>Total</b> 4
24	R(G) 04	Office Cupboard 530mm x 940mmx1980mm	classic design double door cupboards, manufactured using quality materials & components, 4 shelves, lockable door, white/light grey , simple long silver handles, laminate finish,		3
24	R(G) 06	Office Cupboard 530mm x 940mmx1980mm			1
24	R(G) 07	Office Cupboard 530mm x 940mmx1980mm			6
24	R(G) 10	Office Cupboard 530mm x 940mmx1980mm			4
24	Community Room	Office Cupboard 530mm x 940mmx1980mm			5
24	Theatre Office	Office Cupboard 530mm x 940mmx1980mm			2
24	Mayor's Parlour	Office Cupboard 530mm x 940mmx1980mm			3
<b>Total</b> 24					
25	R(G) 10	Office Cupboard 430mm x 800mm x 700mm			<b>Total</b> 1
26	R(G) 04	High 3 Drawer Pedestal 800mm x 400mm x 720mm	classic design double door cupboards, manufactured using quality materials & components, 4 shelves, lockable door, white/light grey , simple long silver handles, laminate finish,	Karbon/ Officefurniture	2
26	R(G) 06	High 3 Drawer Pedestal 800mm x 400mm x 720mm			1
26	R(G) 07	High 3 Drawer Pedestal 800mm x 400mm x 720mm			2
26	R(G) 10	High 3 Drawer Pedestal 800mm x 400mm x 720mm			5
26	Theatre Office	High 3 Drawer Pedestal 800mm x 400mm x 720mm			1
26	Hub1 Library- Information	High 3 Drawer Pedestal 800mm x 400mm x 720mm			2
<b>Total</b> 13					
27	R(G) 10	Office Credenza 400mm x 1800mm x 1200	3 door credenza, laminated oak, simple log silver handles	Karbon/ Officefurniture	<b>Total</b> 1
28		Office Cupboard 430mm x 1200mmx 1200mm	2 door credenza, laminated oak, simple log silver handles	Karbon/ Officefurniture	<b>Total</b> 1
29	R(G) 10	Brochure Rack with Base Cabinet	Dimensions: 427mm x 1096mm x 1115mm , colour: white	LUMINATI, UK	<b>Total</b> 1
<b>Seats</b>					
30	R(G) 07	Seats 800mmx 2000mm	Atom Design Upholstered seating , colour tbc	Corporate Workspace	<b>Total</b> 1
31	Hub 1 Library	Seats 600mmx 1450mm	Atom Design Upholstered seating , colour tbc	Corporate Workspace	<b>Total</b> 1
32	Hub 2 Multi-use Room	Seats 700mmx 1300mm		Karbon/ Officefurniture	<b>Total</b> 8
<b>Bespoke furniture/ arrangement</b>					
33	R(G) 10 Waiting Area	Seats	Refer to Sheet 3.3		
34	Hub 1 Library Information Centre	Reception Desk, Bookshelves, Information	Refer to Sheet 3.1 ;3.2		
35	Hub 1 Library Early Learning	Bookshelves, tables, chairs arrangement	Refer to Sheet 3.4		
<b>Office screen</b>					
36	R(G) 10	Office screen 800mm x 1600mm x 60mm)	Free Standing Acoustic Office Screen. Aluminium Frame Can be linked together, include 2 stabilise feet. Fabric colour tbc.	XL Displays Ltd	<b>Total</b> 12

### 4.0 FURNITURE SCHEDULES

#### 4.3 FURNITURE SCHEDULES

##### HUB1; HUB2 BOOKSHELVES SCHEDULE

DESCRIPTION								
Ref.	Room	Type	Furniture Type Scheme	Dimension ( D x W x H)/ Finishing/Colour/Details	Name/System Equal Approved Manufacturer	No.	Approx. book capacity one unit/ all units	
Bookshelves scheduled by configured single Units - BCI Ratio-B System								
	Hub 1,Hub 2 Library	Type 1		Single Side Bookshelves. Dimensions: 1,265mm x 337mm x 2056mm 7 horizontal shelves (including base & top shelf). Shelves and frame - melamine coated, colour: white . Side panel features & signage tbc	RATIO-S BCI/ The Design Concept	5	300/ 1500	
		Type 2		Single Side Bookshelves. Dimensions: 2,285mm x 337mm x 2056mm 7 horizontal shelves (including base & top shelf). Shelves and frame - melamine coated, colour: white. Side panel features & signage tbc.	RATIO-S BCI/ The Design Concept	4	600/ 2400	
		Type 3		Double Side Bookshelves. Dimensions: 2,285mm x 640mm x 2056mm 7 horizontal shelves (including base & top shelf). On castors. Shelves and frame - melamine coated, colour: white. Side panel features & signage tbc.	RATIO-S BCI/ The Design Concept	3	1200/ 3600	
		Type 4		Double Side Bookshelves. Dimentions: 3,030mm x 640mm x 2056mm 7 horizontal shelves (including base & top shelf). On castors. Shelves and frame - melamine coated, colour: white. Side panel features & signage tbc.	RATIO-S BCI/ The Design Concept	1	1400/ 1400	
		Type 5		Double Side Bookshelves. Dimensions: 2,735mm x 640mm x 2056mm 7 horizontal shelves (including base & top shelf). On castors. Shelves and frame - melamine coated, colour: white. Side panel features & signage tbc.	RATIO-S BCI/ The Design Concept	3	1300/ 3900	
	Hub 1 Library Early Learning	Type 6		2 x Single Unit Double Side Curved Bookshelves Dimensions: 540mm x 1635mm 5 horizontal shelves (including base & top shelf). On castors. Shelves and frame - melamine coated, colour: tbc. Side panel features & signage tbc.	INFORM CURVED SHELVING BCI/ The Design Concept	1	360	
	Hub 1 Library Early Learning	Type 7		4 x Single Unit Double Side Curved Bookshelves Dimensions: 540mm x 1635mm 5 horizontal shelves (including base & top shelf). On castors. Shelves and frame - melamine coated, colour: tbc. Side panel features & signage tbc.	INFORM CURVED SHELVING BCI/ The Design Concept	1	720	
	Hub 1 Library Information Centre	Type 8		Double Side Curved Bookshelves. Dimensions: ,735mm x 540mm x 1635mm 5 horizontal shelves (including base & top shelf). On castors. Shelves and frame - melamine coated, colour: white. Side panel features & signage tbc.	Custom made See GWP (Refer to Sheet 3.1 ; 3.2)	3	230/ 690	
<b>TOTAL BOOK CAPACITY</b>							<b>14 570</b>	
Bookshelves scheduled by single Units - BCI Ratio-B System								
19	Hub 1,Hub 2 Library	Book shelving	337mm x 500mm x 2056mm	RATIO-S BCI/ The Design Concept Ratio-S shelving system 2056mm height. 7 horizontal shelves (including base & top shelf). On castors. Shelves and frame - melamine coated, white colour. Side panel features tbc.			5	
20	Hub 1,Hub 2 Library	Book shelving	337mm x 750mm x 2056mm				Total- including 26 on castors	38
21	Hub 1,Hub 2 Library	Book shelving	337mm x 900mm x 2056mm				Total- including 18 on castors	18
21	Hub 1,early learning corner	Curved bookshelves				Total- including 18 on castors	12	



**LEEDS**

bracken house  
1 lidgett lane  
leeds  
ls8 1pq

0113 266 6044 (t)

[www.gwp-arch.com](http://www.gwp-arch.com)  
[architecture@gwp-arch.com](mailto:architecture@gwp-arch.com)

**LONDON**

71-75 shelton street  
borough of camden  
london  
wc2h 9jq

020 7470 8770 (t)

[www.gwp-arch.com](http://www.gwp-arch.com)  
[architecture@gwp-arch.com](mailto:architecture@gwp-arch.com)

**CARDIFF**

15TH floor  
brunel house  
2 fitzalan road  
cardiff, cf24 0eb

02921 303 322 (t)

[www.gwp-arch.com](http://www.gwp-arch.com)  
[architecture@gwp-arch.com](mailto:architecture@gwp-arch.com)

**MANCHESTER**

46 barton arcade  
deansgate  
manchester  
m3 2bh

0161 962 4882 (t)

[www.gwp-arch.com](http://www.gwp-arch.com)  
[architecture@gwp-arch.com](mailto:architecture@gwp-arch.com)

